



St James Terrace Mews, NW8 7LJ
£4,200





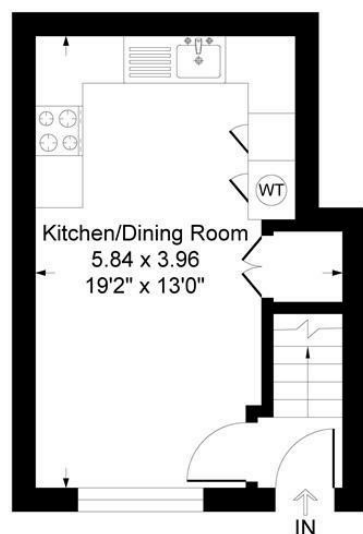
3 x  **3 x**  **1 x** 

Braithwait are pleased to offer this spacious three bedroom Mews house right by both Regent's Park and Primrose Hill. This property, newly refurbished, features a modern kitchen on the ground floor, first floor comprises three double bedroom en-suite plus a guest WC, the entire second floor is occupied by a large living room going through a roof terrace. St James Terrace Mews is situated just moments away from both Regents Park and Primrose Hill with the trendy shops and cafes of St Johns Wood High Street close by.



St James's Terrace Mews, London NW8

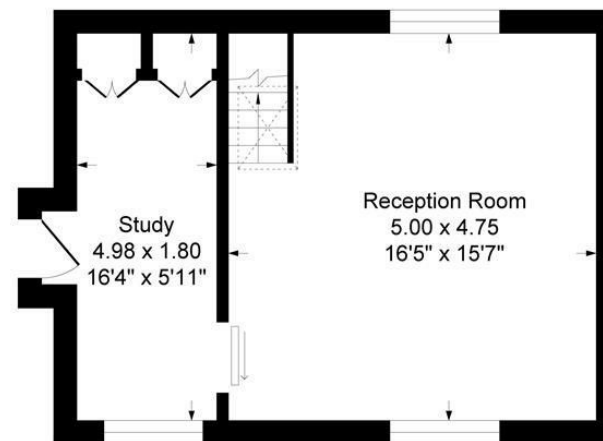
Approximate Gross Internal Floor Area = 115.9 sq m / 1248 sq ft



Ground Floor



First Floor



Second Floor

Illustration for identification purposes only, measurements are approximate, not to scale.

Important Notice Debussy Property Service Ltd trading as Braithwait for themselves and for the vendor of this property whose agents they are, give notice that (i) these particulars do not constitute any part of an offer or contract, (ii) all statements contained within these particulars are made without responsibility on the part of Braithwait or the vendor, (iii) whilst none in good faith, none of the statements contained within these particulars are to be relied upon as a statement of representation or fact, (iv) any intending purchaser must satisfy him/herself by inspection or otherwise as to the correctness of each of the statements contained within these particulars, (v) the vendor does not make or give either Braithwait or any person within their employment any authority to make or give any representation or warranty whatsoever in relation to this property. Wide angled lenses may be used in photographs.

Call us on 0207 289 8889 or email sales@braithwait.co.uk

